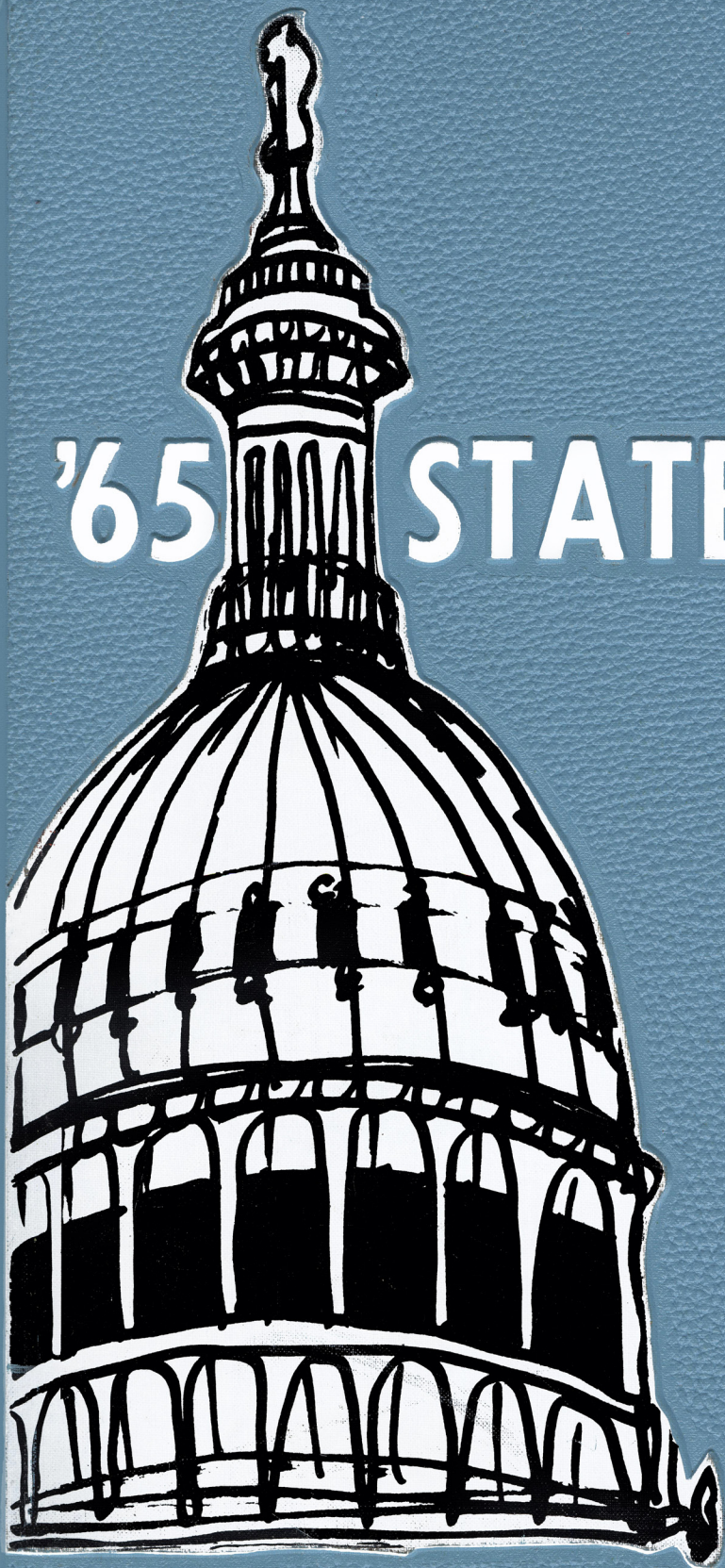


STATESMAN

1965

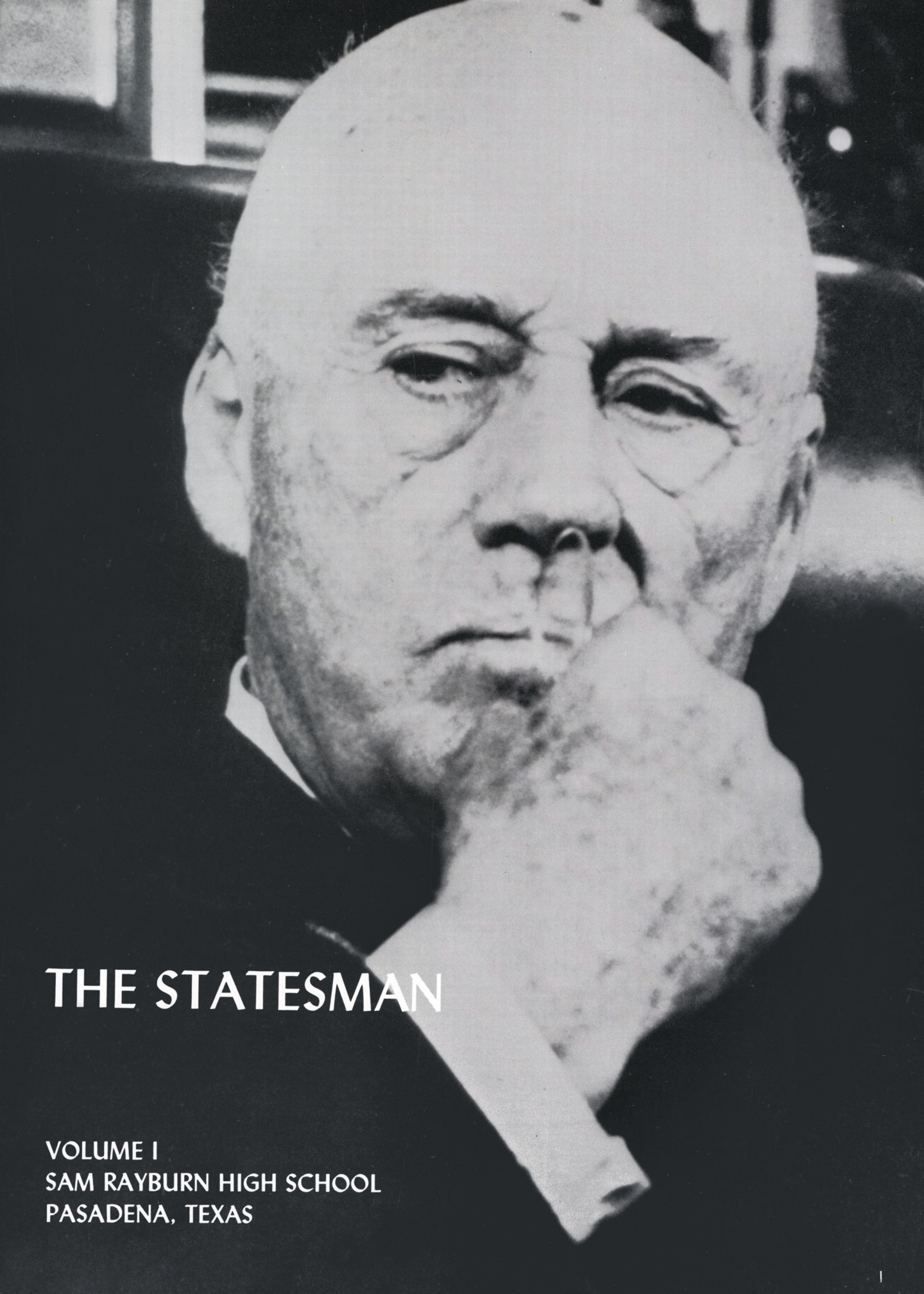
VOL. -



'65 STATESMAN

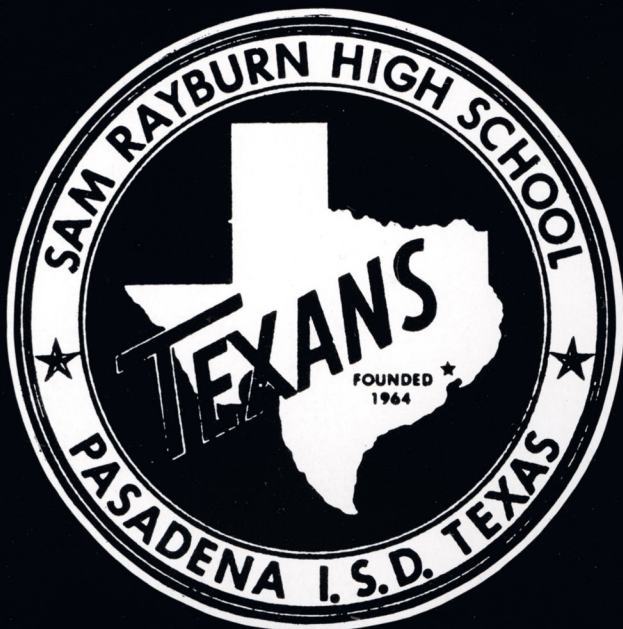




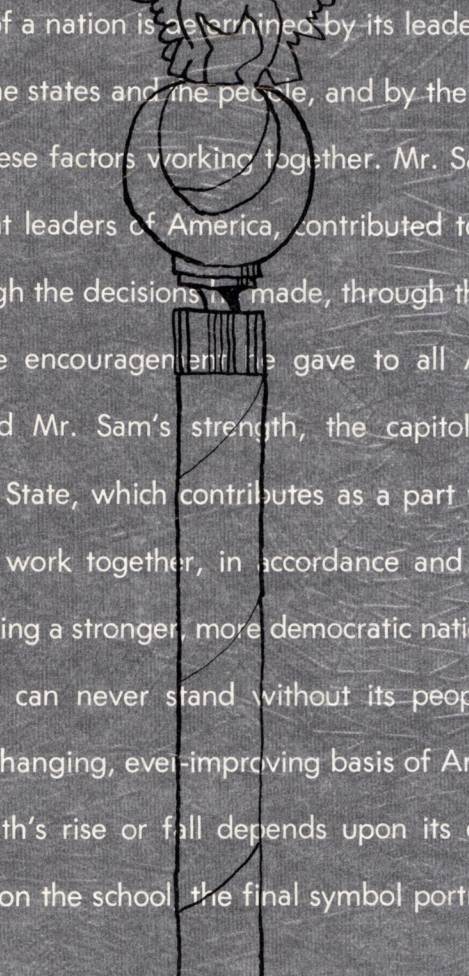


THE STATESMAN

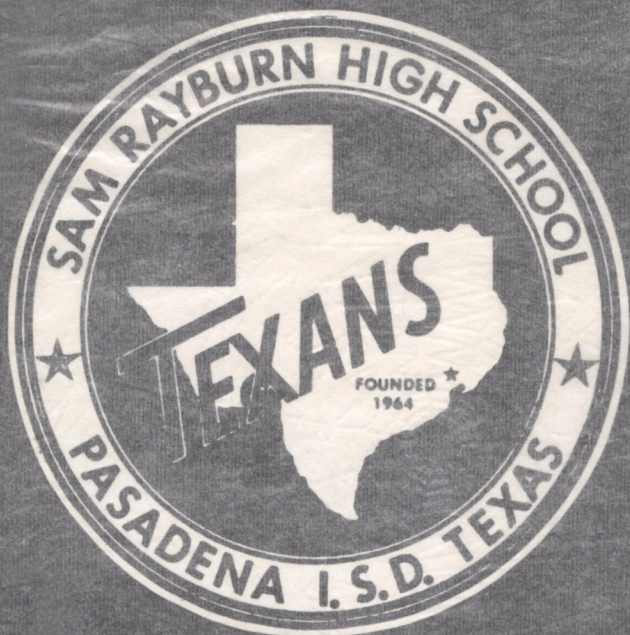
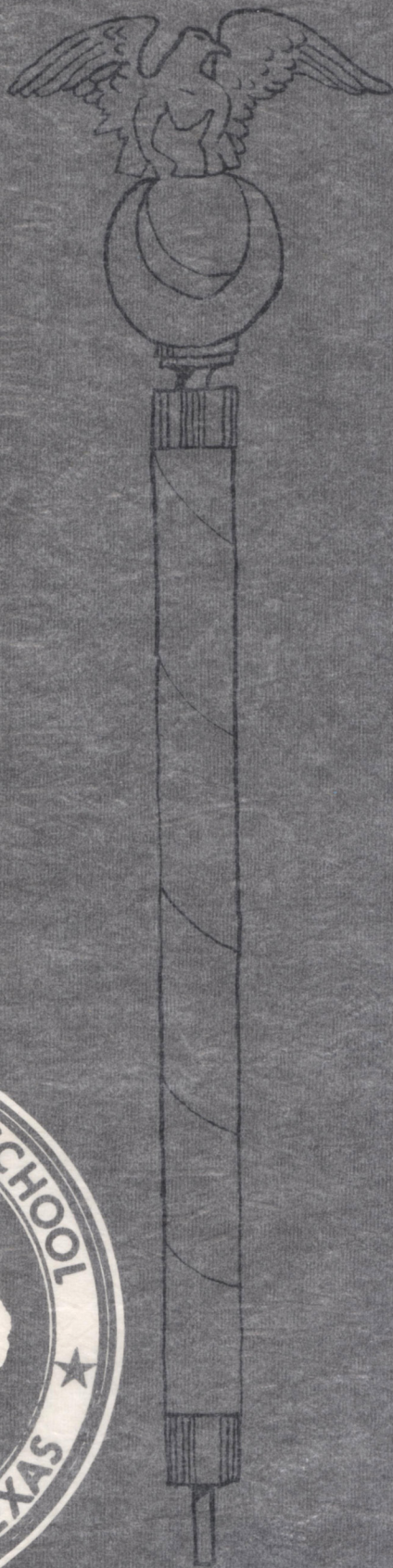
VOLUME I
SAM RAYBURN HIGH SCHOOL
PASADENA, TEXAS



FOREWORD



The strength of a nation is determined by its leadership, by its contributing parts, the states and the people, and by the final end accomplished by all these factors working together. Mr. Sam Rayburn, one of the truly great leaders of America, contributed to the strength of our nation through the decisions he made, through the policies he set, and through the encouragement he gave to all America. As the mace symbolized Mr. Sam's strength, the capitol symbolizes the strength of each State, which contributes as a part to the whole nation. The States work together, in accordance and in contrast with each other, building a stronger, more democratic nation. But the State, thus the nation, can never stand without its people, especially its youth, the ever-changing, ever-improving basis of American freedom. In turn, the youth's rise or fall depends upon its education, which is dependent upon the school, the final symbol portrayed here in the 1965 *Statesman*.



FOREWORD

The strength of a nation is determined by its leadership, by its contributing parts, the states and the people, and by the final end accomplished by all these factors working together. Mr. Sam Rayburn, one of the truly great leaders of America, contributed to the strength of our nation through the decisions he made, through the policies he set, and through the encouragement he gave to all America. As the mace symbolized Mr. Sam's strength, the capitol symbolizes the strength of each State, which contributes as a part to the whole nation. The States work together, in accordance and in contrast with each other, building a stronger, more democratic nation. But the State, thus the nation, can never stand without its people, especially its youth, the ever-changing, ever-improving basis of American freedom. In turn, the youth's rise or fall depends upon its education, which is dependent upon the school, the final symbol portrayed here in the 1965 *Statesman*.



CONTENTS



INTRODUCTION	I
ADMINISTRATION	16
ELECTORATE	60
ATHLETICS	182
PROMINENCE	232
ORGANIZATIONS	270
INSIGHT	330
ADVERTISEMENTS	340
INDEX	365





*Death makes no conquest of this conqueror:
For now he lives in fame, though not in life.*

SHAKESPEARE, *Richard III*



*Statesman, yet friend to truth! of soul sincere,
In action faithful, and in honour clear,
Who broke no promise, served no private end,
Who gained no title, and who lost no friend;
Ennobled by himself, by all approv'd,
Praised, wept, and honored . . .*

ALEXANDER POPE



F.T.A. members Barbara Starr and Peggy Hulsey act as guides at the open house held before school started at Sam Rayburn. The open house gave a preview of the new building to students, parents, and faculty.

FRESHMEN MEET
IN THE CAFETERIA
SOPHOMORES
MEET IN THE AUD.
WED SEPT 2-8:15^{AM}

SENIORS MEET
IN THE PATIO ON
THE WEST SIDE OF
SCHOOL
WED. SEPT. 2-8:15

JUNIORS MEET
IN FRONT OF
THE SCHOOL
WEDNESDAY MORN.
SEPT 2 8:15 A.M.

Summer days end as the school routine begins with detailed instructions, the smell of fresh paint, and almost unbearable heat.



The smiling faces of workmen meet the curious Rayburnites who come for an early preview of the school.



Mark Waller realizes that football district 12-AAAA is one of rough action, victory, and defeat.



Mr. Guinn directs the Texan Band with patience and an exacting knowledge of music.



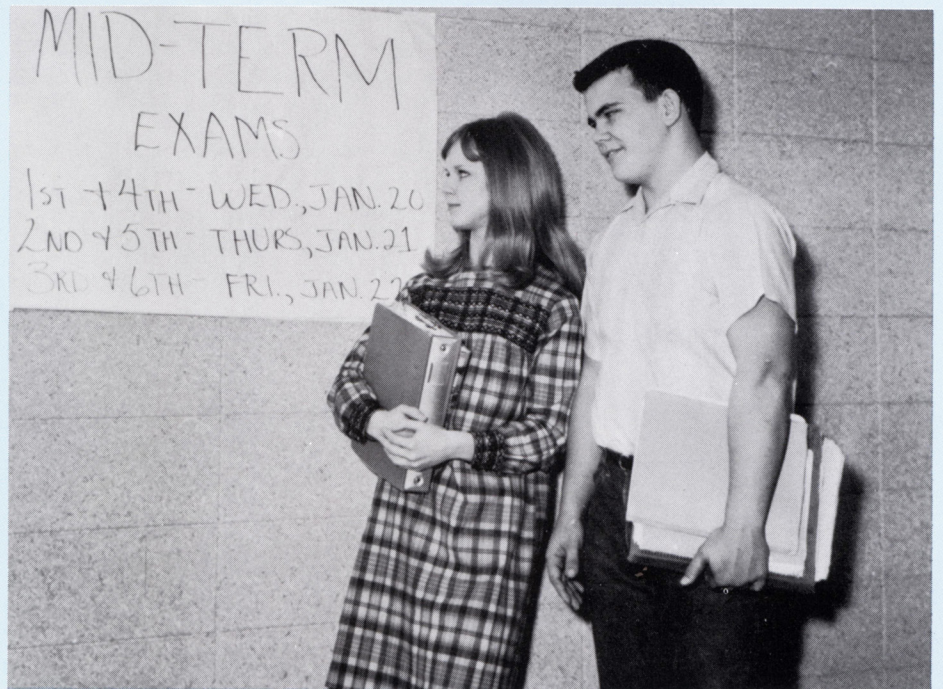
Under Drum Major Robert Heath's stern instruction, the band performs with dauntless enthusiasm.



Rayburn Texans will always remember Tex Brewster, composer of the music of Sam Rayburn's alma mater.



At the Town and Country Fair, sponsored by the F.H.A. and the F.F.A., Suzanne Wilson sells doll clothes, one of the many items made by the members of the F.H.A. for sale at the fair.



Carolyn Boggs and Louis Adams look askance at the grim reminder of semester tests.



Seniors Bryan Gammage, Lydia Furness, Judy Chastain, Ann Samuel, and Hugh Reeves compare and contrast the various colleges they will attend next fall.



Students looked twice at this colorful display, one of the hallmarks promoting the Fine Arts Festival.



Twins Mary and Martha Peckinpaugh join together in publicizing the junior class play, "The Importance of Being Earnest."

Carolyn Fredregill was one of the first lovely candidates at the Bluebonnet Pageant, another tradition established this year at Sam Rayburn.



Barbara Carpenter and Lynn Hancock pose for pictures at the Prom while other eager seniors look on (or off).

